



dumotex

|||| Artículos para tapicería ||||

“*Innovación y elegancia* en cada metro”

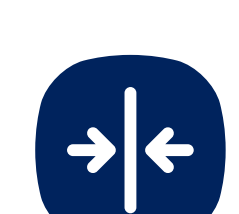
Pieles | Cueros

Ver catálogo



# Colección Furia

(Ver última pág. significado de iconos)



1,10 mm



4 (ISO 4045)



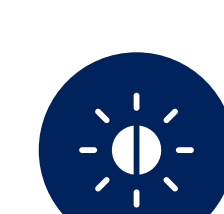
+50.000  
(ISO 5402)



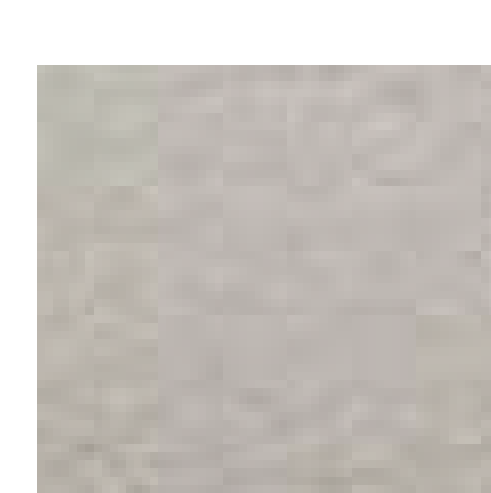
52N  
(ISO 3377)



Seco +4 /  
Húmedo +3 /  
Sudor +3  
(UNI EN ISO 11640)



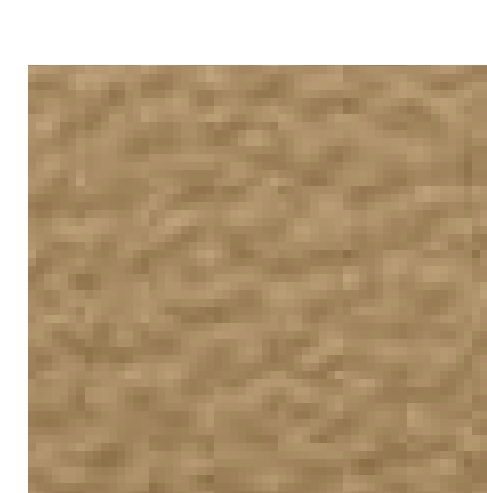
+7 (UNI EN ISO  
105 105 B02)



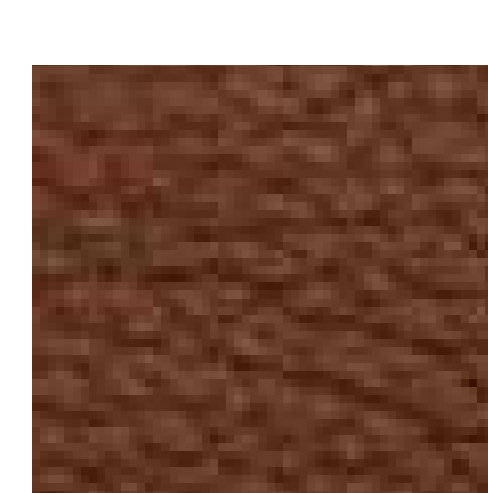
Blanco



Sand



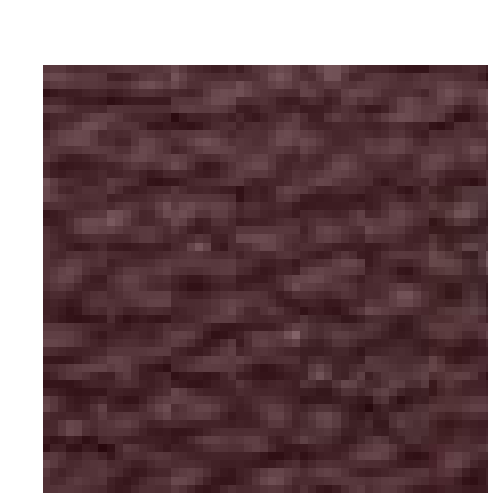
Bergamo



Cuir



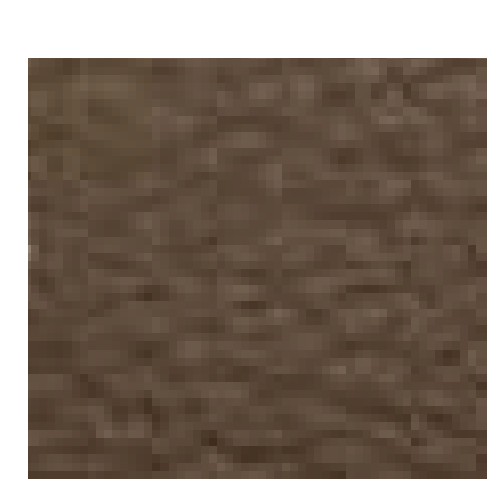
Rojo



Burdeos



Wild Forest



Greige



Chocolate



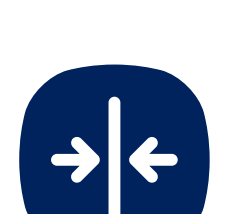
Darkness



Darkness

# Colección Metaliks

(Ver última pág. significado de iconos)



1,20 mm  
1,40 mm



3,5



Superior 50000  
ISO5402



superior 20N  
DIN 53329



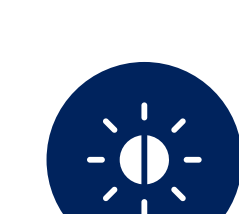
Piel Bovina  
Curitación  
al cromo



ISO 11644



Seco 500 +4 /  
Húmedo 80 +4 /  
Sudor 50 +4



5 ISO 105 B02



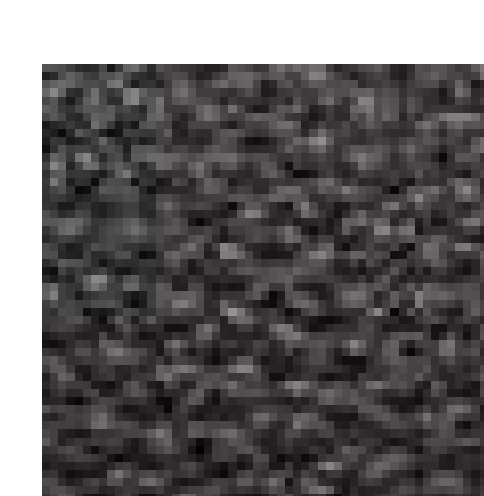
Gold-Wings



Antique



Pearl



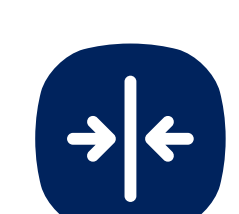
Graft



Magic Dark

# Colección Vintage

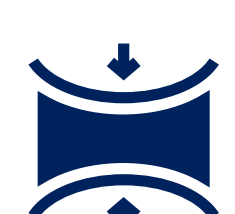
(Ver última pág. significado de iconos)



1,10 mm



4 (ISO 4045)



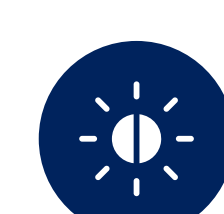
+50.000  
(ISO 5402)



52N  
(ISO 3377)



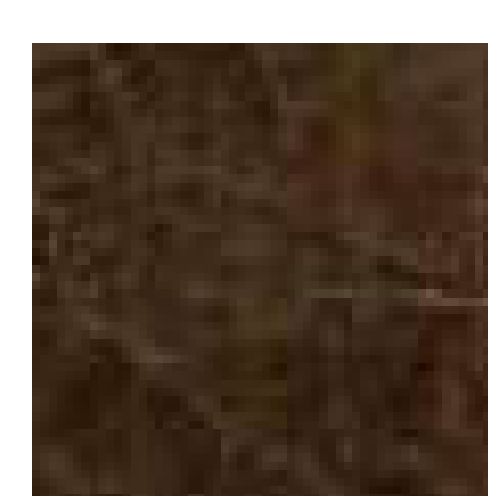
Seco +4 /  
Húmedo +3 /  
Sudor +3  
(UNI EN ISO 11640)



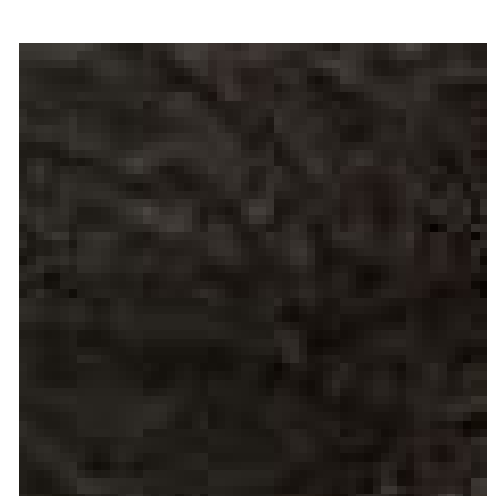
+7 (UNI EN ISO  
105 105 B02)



Roxi



Old cuir



Dark Brown



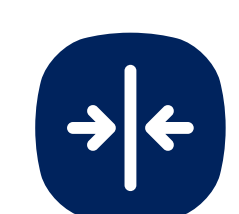
Verde



Negro

# Colección Nature Flor

(Ver última pág. significado de iconos)



1,10 mm



4 (ISO 4045)



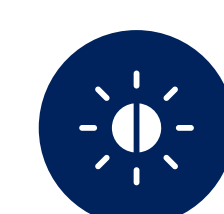
+50.000  
(ISO 5402)



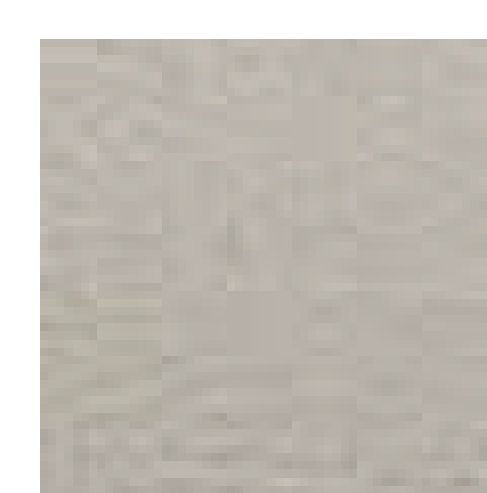
52N  
(ISO 3377)



Seco +4 /  
Húmedo +3 /  
Sudor +3  
(UNI EN ISO 11640)



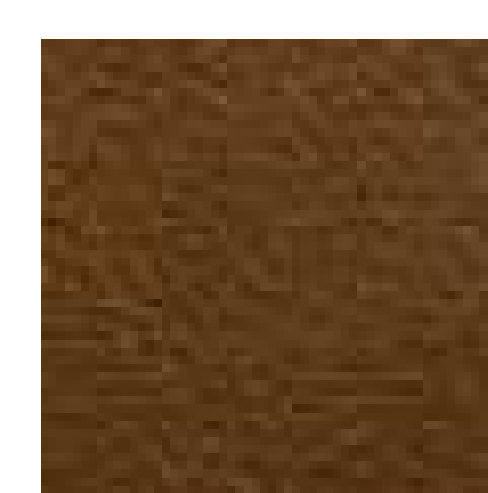
+7 (UNI EN ISO  
105 105 B02)



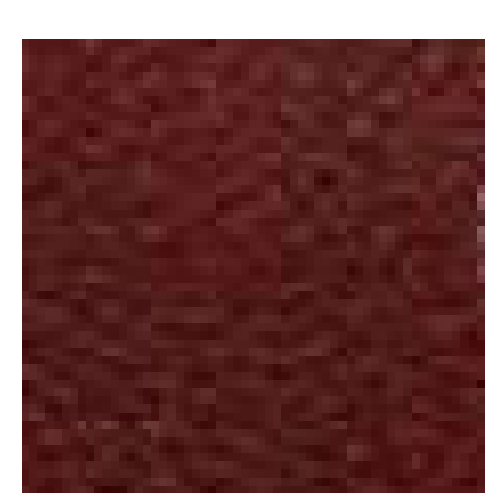
Blanco



Skin



Cuirrosso



Rojo



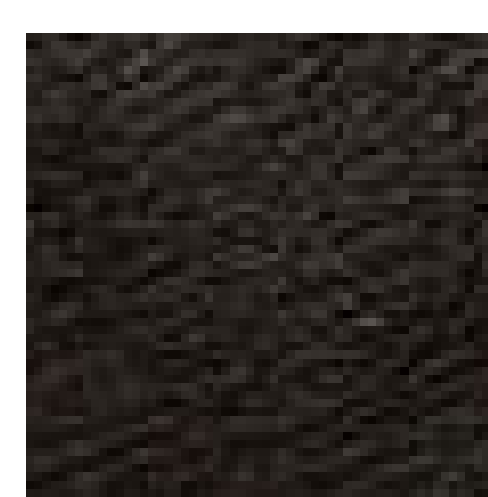
Sunset



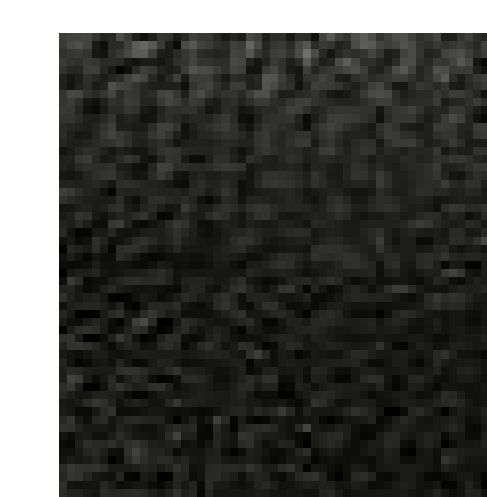
Gris



Pepper



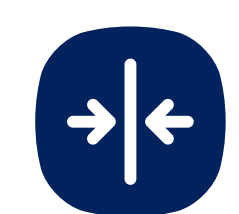
Chocolate



Negro

# Colección Niebla

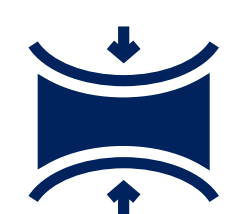
(Ver última pág. significado de iconos)



1,10 mm



4 (ISO 4045)



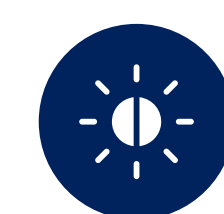
+50.000  
(ISO 5402)



52N  
(ISO 3377)



Seco +4 /  
Húmedo +3 /  
Sudor +3  
(UNI EN ISO 11640)



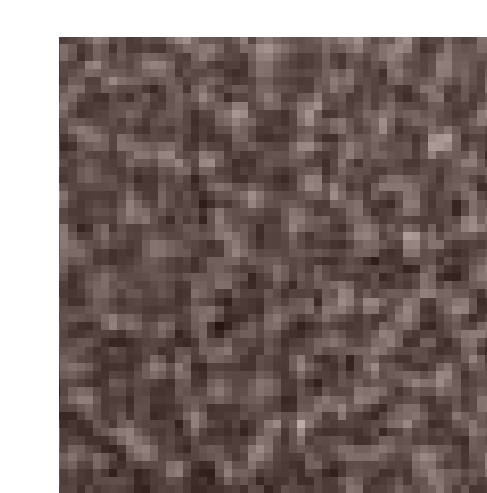
+7 (UNI EN ISO  
105 105 B02)



Blanco



Hielo



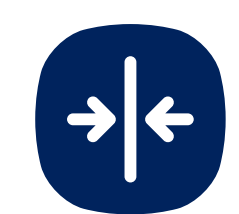
Terra



Grissa

# Colección Reno

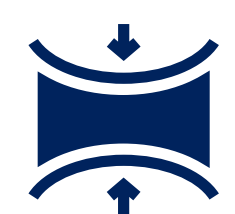
(Ver última pág. significado de iconos)



1,10 mm



4 (ISO 4045)



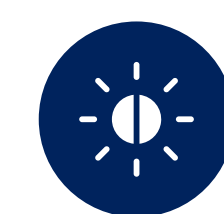
+50.000  
(ISO 5402)



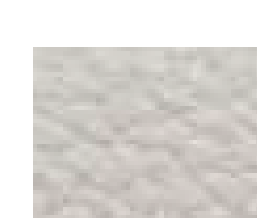
52N  
(ISO 3377)



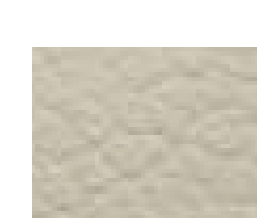
Seco +4 /  
Húmedo +3 /  
Sudor +3  
(UNI EN ISO 11640)



+7 (UNI EN ISO  
105 105 B02)



Blanco



Ivory



Nevada



Hielo



Safari



Dust



Rojo



Bishop



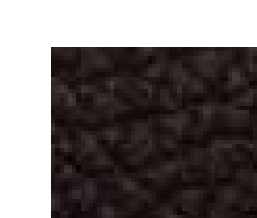
Fruits



Pepper



Bluoleto



Pasion



Purple



Cuero



Taupe



Tabaco



Chocolate



Gris



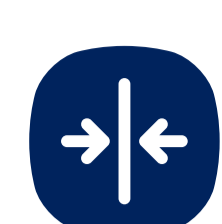
Darkness



Negro

# Colección Soul

(Ver última pág. significado de iconos)



1.10 mm



4 (ISO 4045)



+50.000  
(ISO 5402)



52N  
(ISO 3377)



Seco +4 /  
Húmedo +3 /  
Sudor +3  
(UNI EN ISO 11640)



+7 (UNI EN ISO  
105 105 B02)



Blanco

Hielo

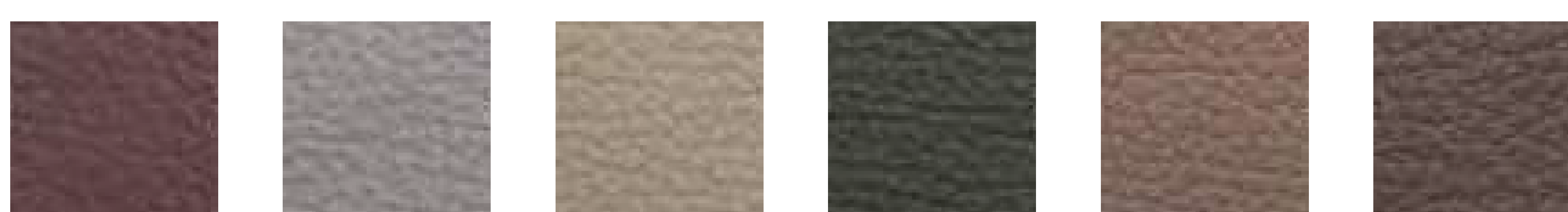
Pergamino

Polar

Brunette

Rojo

Vermelio



Rosetta

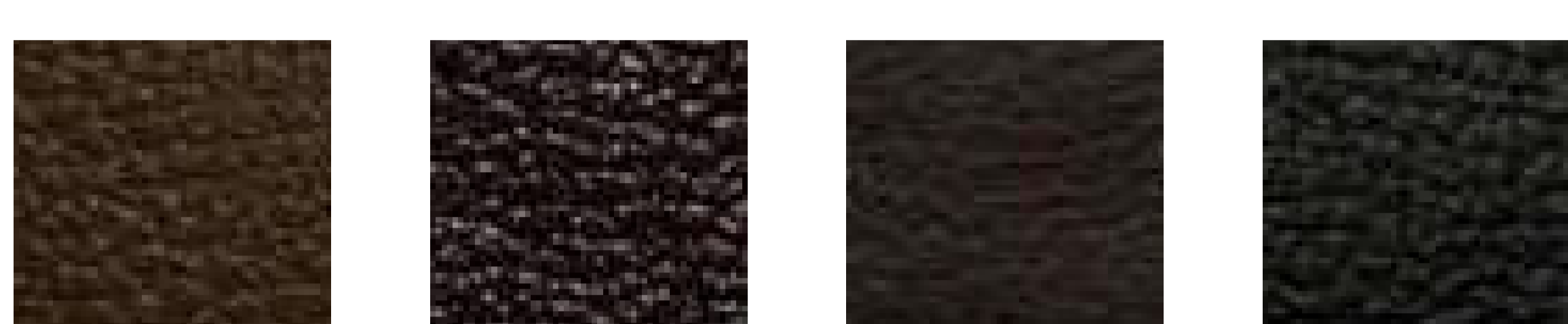
Niebla

Skin

Ceniza

Terranova

Taupe



Savanah

Goulat

Chocolate

Negro

# Colección Pure

(Ver última pág. significado de iconos)



1.0 - 1.1 mm



4 (ISO 4045)



+50.000  
(ISO 5402)



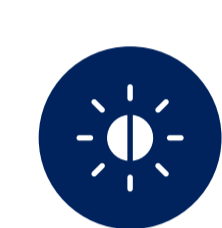
52N  
(ISO 3377)



IUF 450>500



IUF 450>150



GREY SCALE 5



IUF 20>60.000



4.5 m<sup>2</sup>



Blanco

Marfil

Hielo

Bruma

Petrus

Light

Cream



Subit

Vain

Sweet

Cuir

Valian

Fang

Ribon



Marrón

Brazil

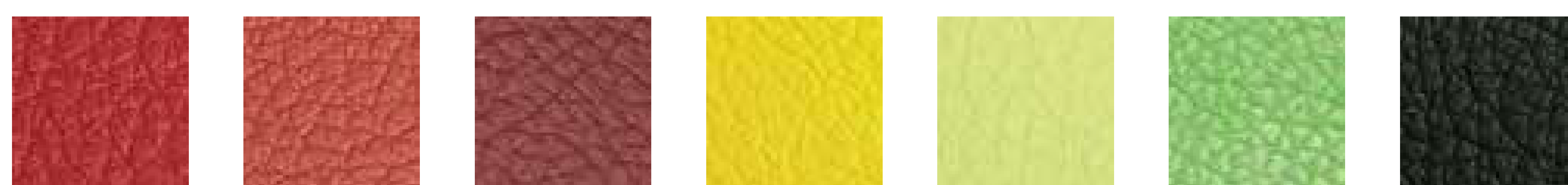
Dark Brown

Choc

Orange

Verma

Love



Sweet Red

Naturalis

Burdeos

Sun

Peal

Greens

Verde



Jade

Blue

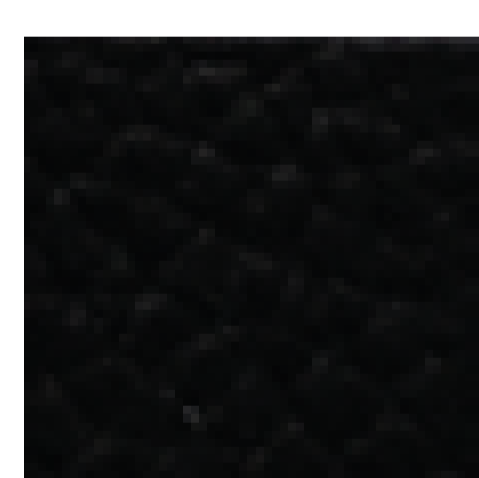
Gris

Navy

Light Gris

Gris

Darkness



Negro

# Colección Noble

(Ver última pág. significado de iconos)



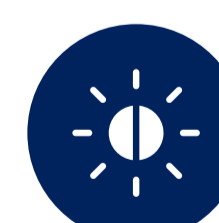
1.3 - 1.5 mm



IUF 450>500



IUF 450>150



GREY SCALE 5



IUF 20>60.000



4.5 m<sup>2</sup>



Blanco

Ice

Turnof

Tuman

Arena

Sweet Thing

Petra



Movia

Camel

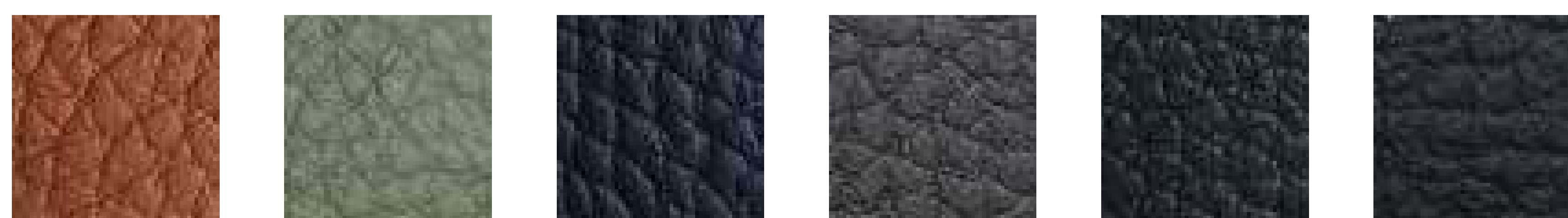
Barnizia

Topo

Campiña

Rojo

Burdeos



Cuir

Verde

Sunset

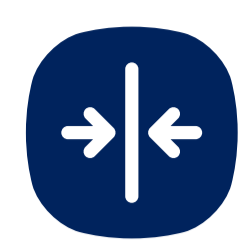
Chocolate

Deeps

Negro

# Colección Flor

(Ver última pág. significado de iconos)



1.0 - 1.1 mm



IUF 450>500



IUF 450>150



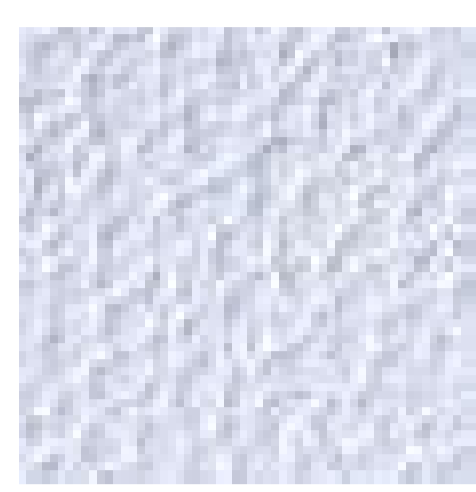
GREY SCALE 5



IUF 20>60.000



5 m<sup>2</sup>



Blanco



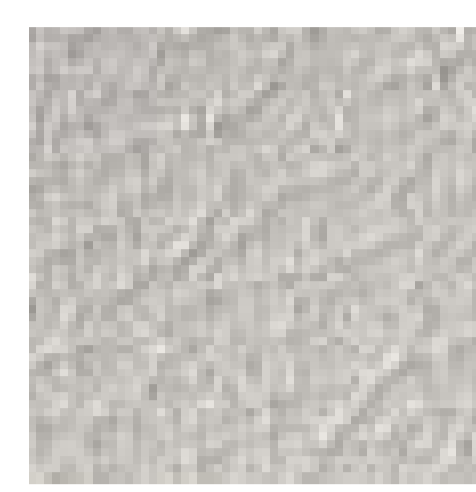
Marfil



Dols



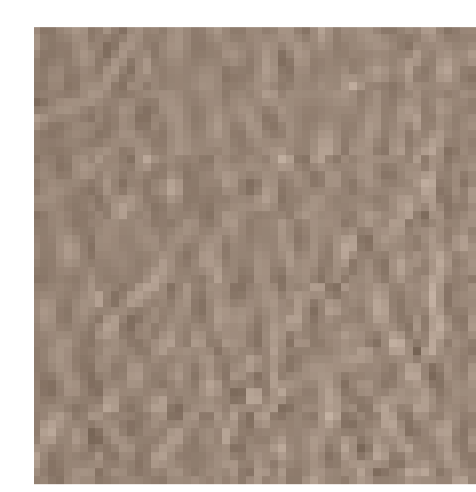
Sand



Empty



Denia



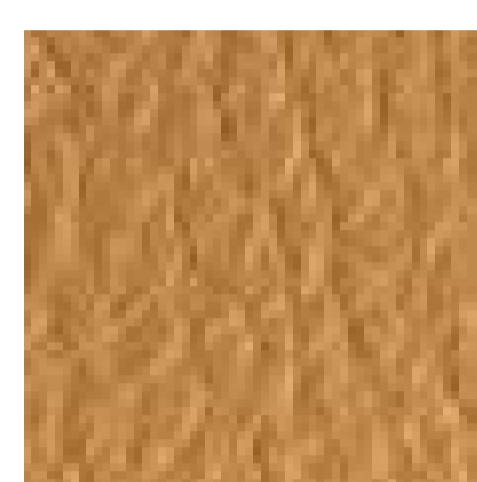
Dust



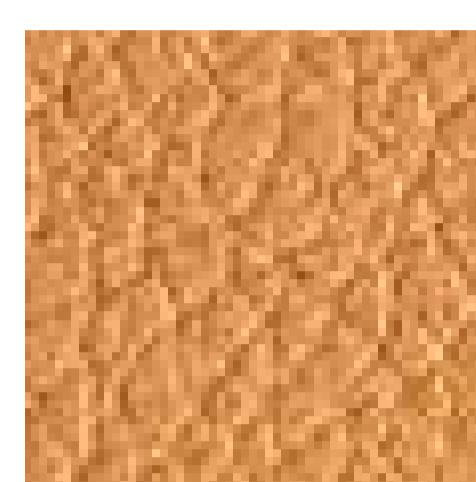
Taupe



Camel



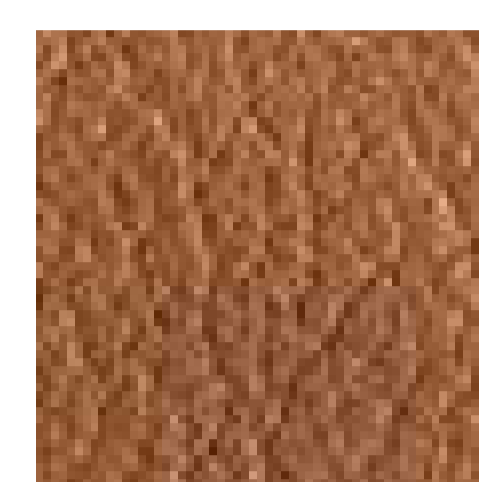
Haric



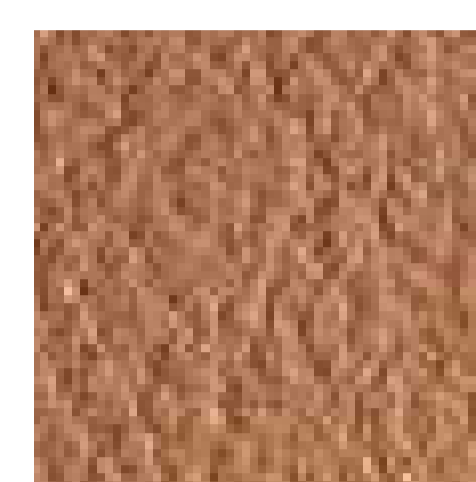
Gobi



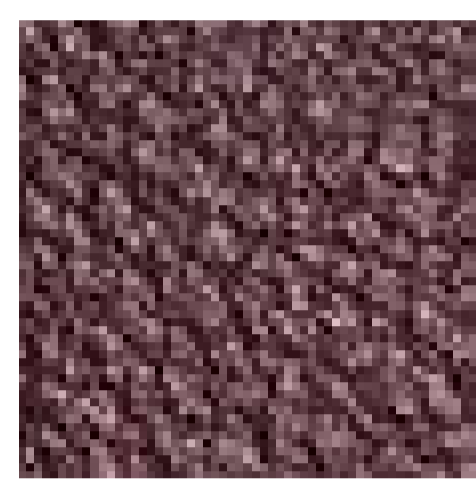
Cuir



Stones



Gum



Cognac



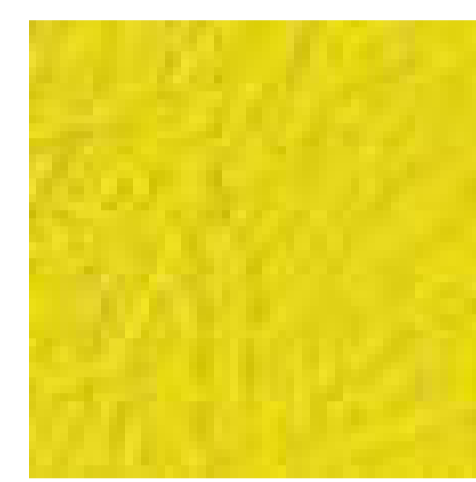
Dacha



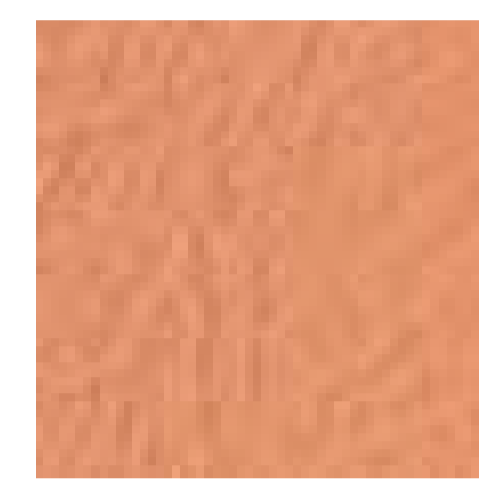
Chocolate



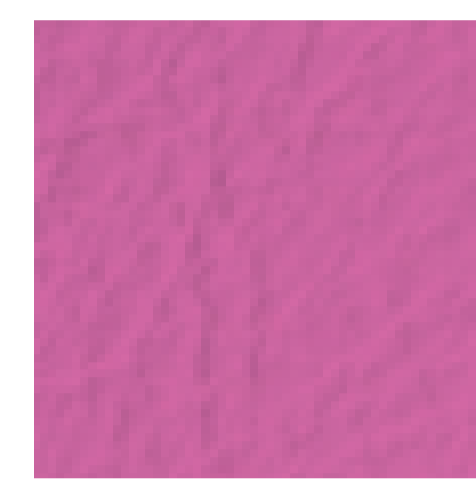
Dark



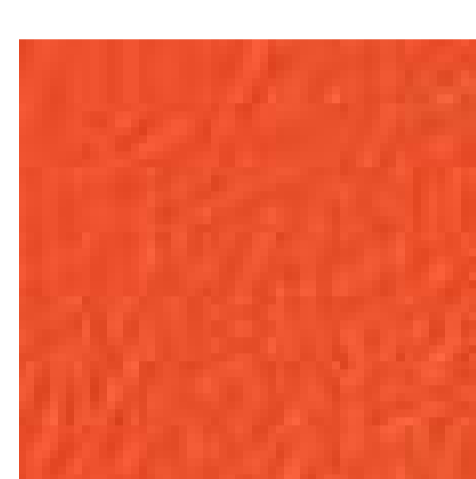
Yellow



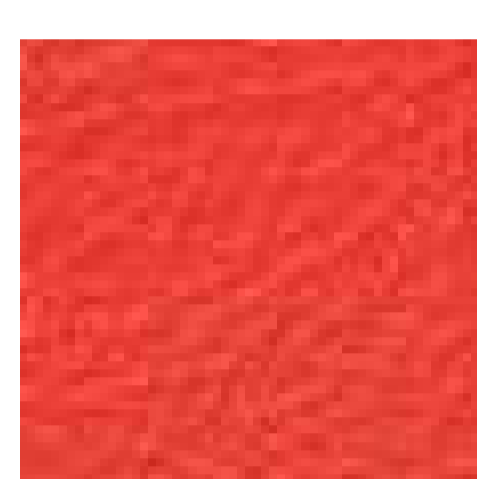
Salmon



Pink



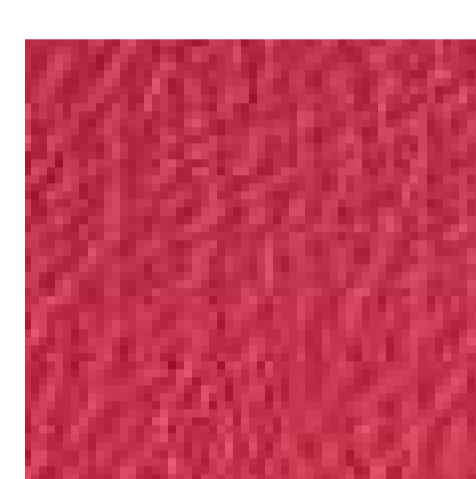
Organge



Reds



Luxe



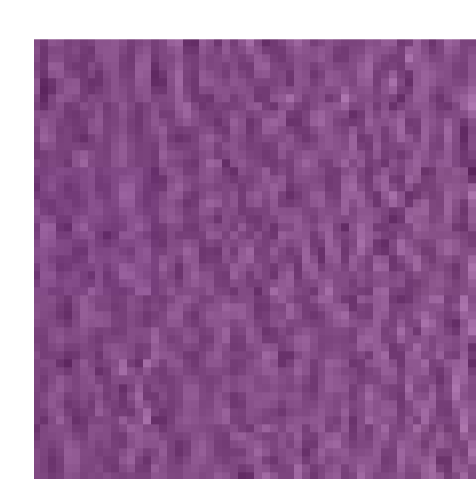
Lips



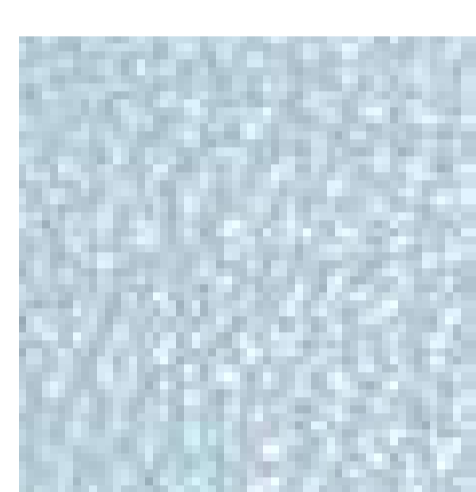
Fuits



Melania



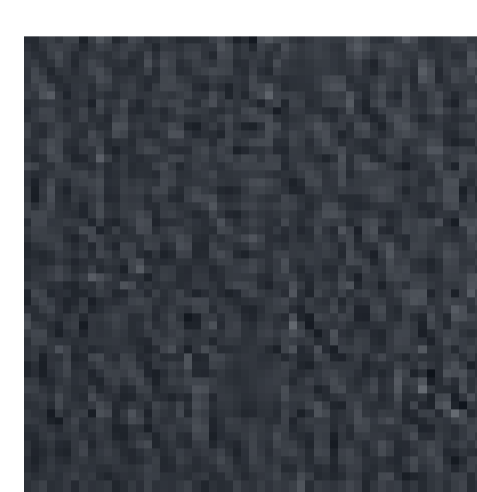
Lila



Azur



Blue



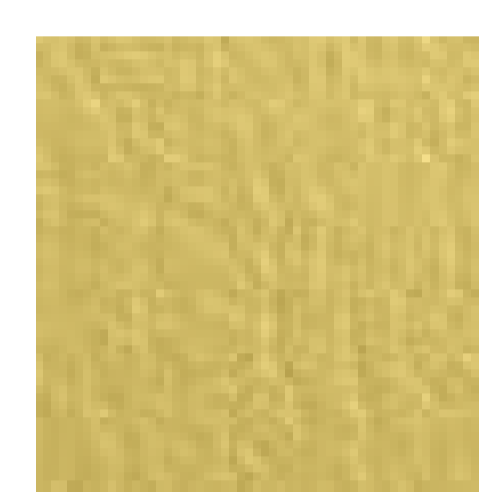
Navy



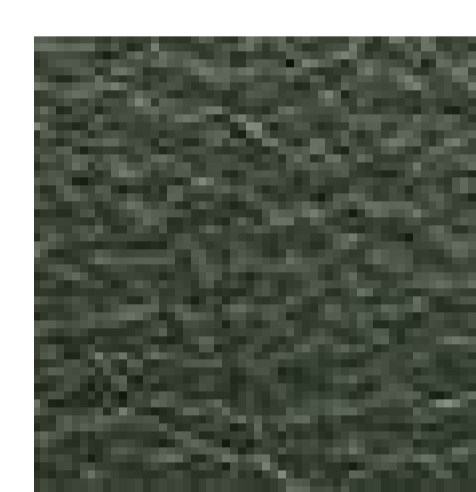
Summer



Night Sounds



Olive



Verde



Army



Rest



Steel



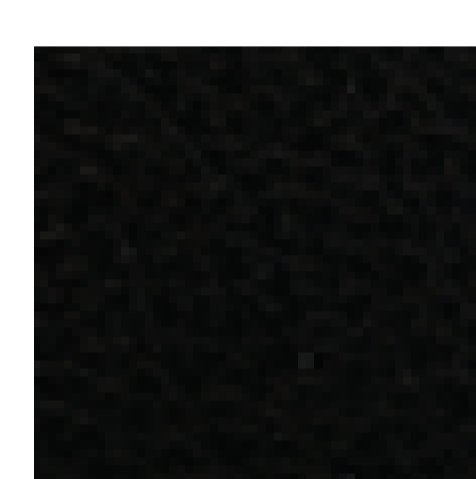
Visonia



Punk



Gris



Negro

## Cuero / Cuello Vaquetilla



Entre 3,5 Y 4 mm



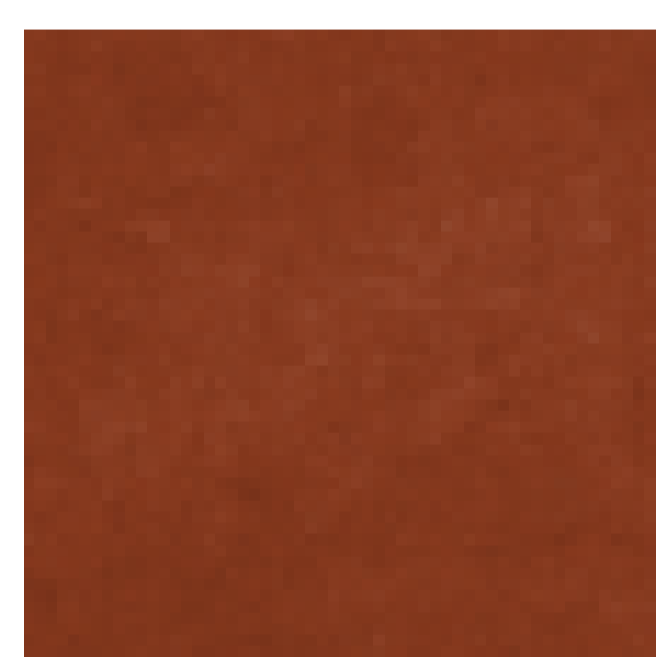
Piezas unitarias de 12-14 pies aproximadamente.



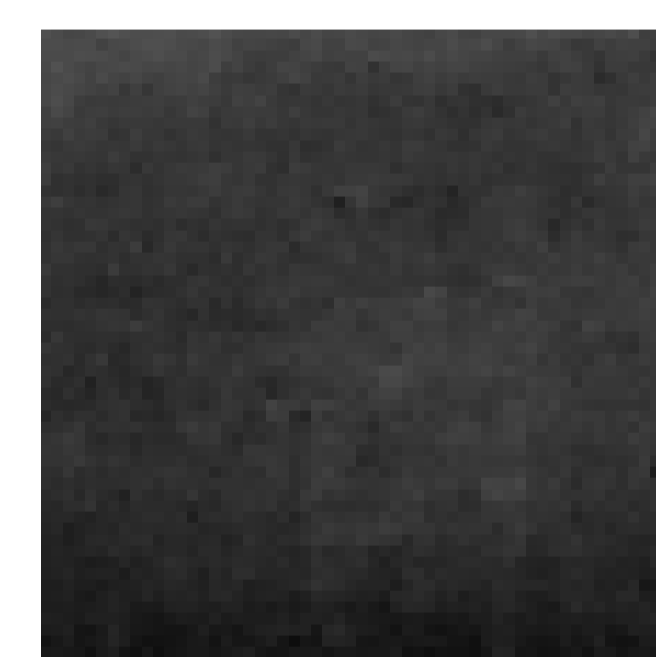
Natural



Tostado



Cognac



Negro

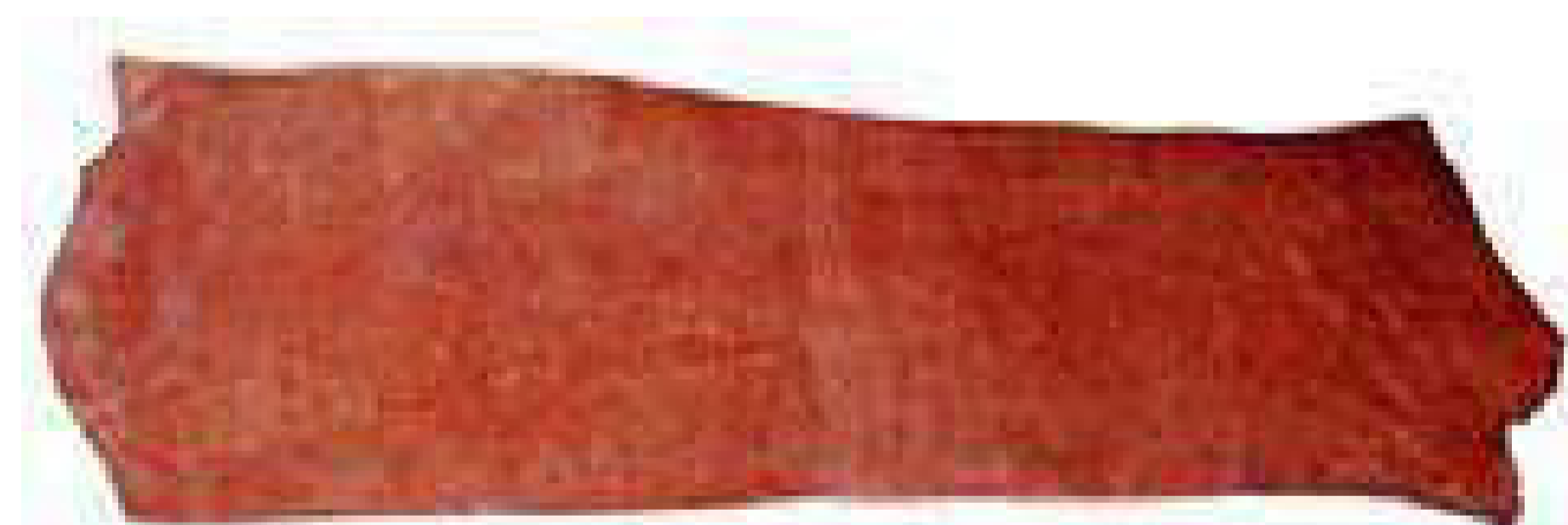
### Crupón de cromo



Grueso: de 3 mm a 4 mm  
Pies: de 9 a 11 pies.

Se utiliza para confeccionar collares de perro y cabezadas para caballo.

### Dossets



Curtición vegetal en piel flor.

Gruesos: de 4 mm a 5 mm  
Pies: de 19 a 20.

Colores: tostado, negro y cromo  
Se utiliza en la confección de riendas y cabezadas para los caballos.

### Badana



Grueso: 1,5 mm a 2 mm de 6 pies a 8 pies

Colores: natural y tostada

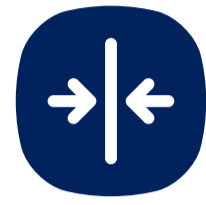
### Serraje



Grueso: 1,5 mm a 2 mm 6 pies a 13 pies  
Colores: negro, marrón, arena y burdeos

Se utiliza para la confección de forros, fuelles y otros usos de confección.

| LEYENDA ICONOS |



Espesor



Determinación del pH



Resistencia a la flexión



Resistencia al desgarro



Composición



Adherencia del acabado



Resistencia al frote



Solidez a la luz



Tamaño medio



Flexometría



Resistencia al frote  
seco



Resistencia al frote  
húmedo



Piezas unitarias

---

dumotex

|||| Artículos para tapicería ||||